

# The post-Covid roadmap approaches from the local authorities

by Ms. Lies Laridon,  
Mayor of the City of Diksmuide (Belgium)



**What lies behind us and  
what lies ahead of us  
are tiny matters compared  
to what lies within us**

*Ralph Waldo Emerson*





**LET'S TALK  
NUMBERS THE  
ECONOMIST SAID**

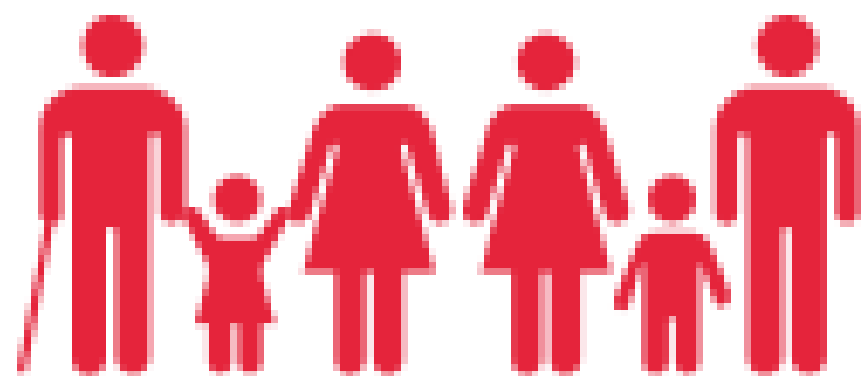


**+/- 15.000 HA**

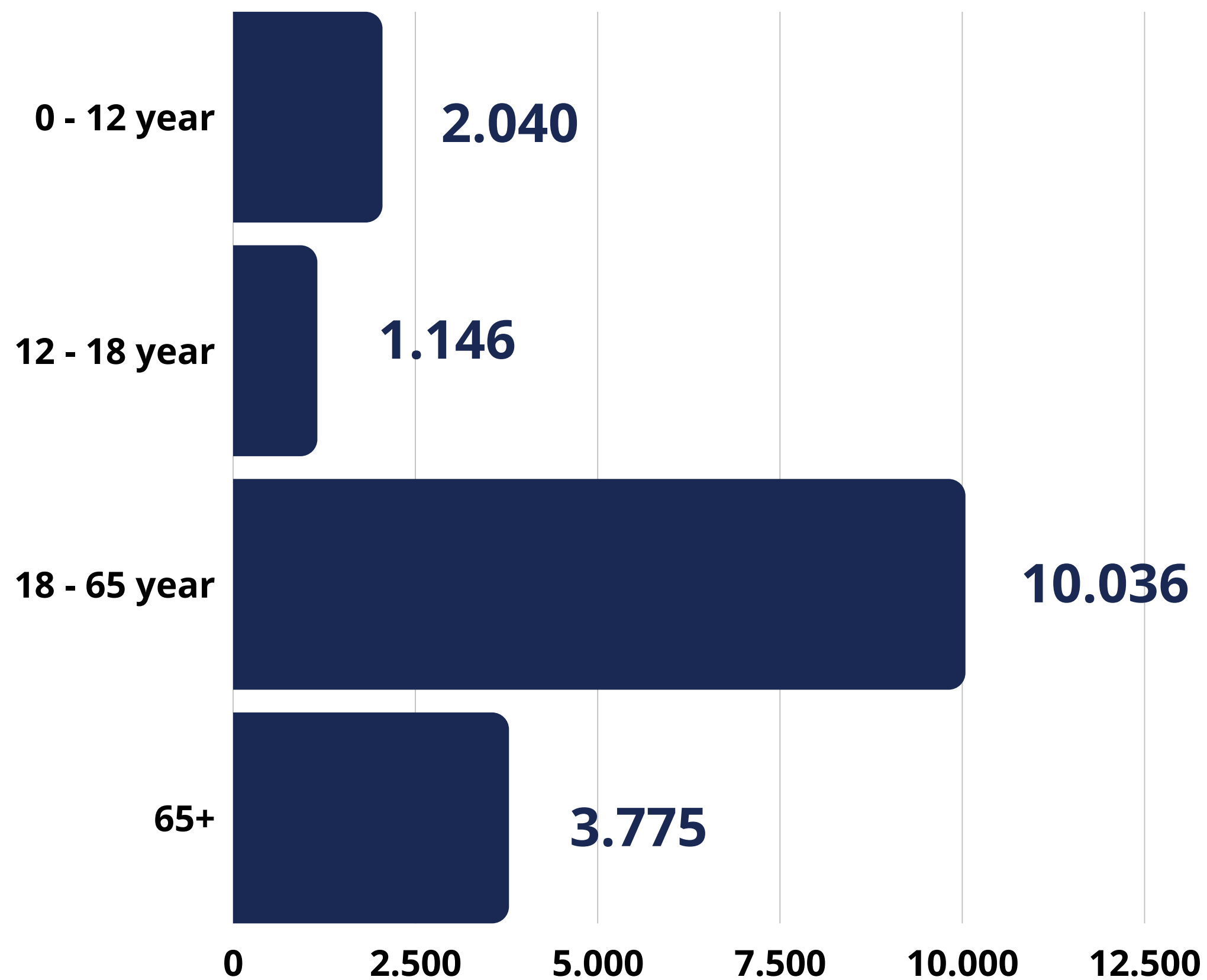
**1 city center**

**14 villages**

Diksmuide . Stuivekenskerke  
Esen . Woumen . Keiem .  
Beerst . Kaaskerke . Leke.  
Sint-Jacobskapelle. Vadslo .  
Nieuwkapelle . Oostkerke .  
Lampernisse . Oudekapelle .  
Pervijze



**16.997 citizens**





**3.923 Businesses**

- TOURISM
- AGRICULTURE
- SME
- RETAIL
- LIBERAL PROFESSIONS
- SMALL TRADE ZONE
- INDUSTRY





# COVID - HIERARCHY



# HOW DID WE APPROACH THIS CRISIS?

## 1 HEALTHCARE

Support and locale care  
Vaccination strategy  
Test centre for covid detection  
Communication  
Medical / protective materials / face masks  
Transport for people with reduced mobility

## 2 BUSINESS SUPPORT

Inform and support  
Encourage purchasing power  
Lower corporate taxes (9/12)  
Consumption coupon

## 3 SOCIAL LIFE

Support for associations  
Guidelines  
Double subvention

## 4 PUBLIC SERVICES

Stay available  
Change our services  
Helpdesk  
Administration  
Structural city work

## 5 MENTAL HEALTH

Small (adapted) open air events  
Social calls  
Postpone main events  
Collection box city walks  
In house psychologist

**It always seems impossible until it's done**

*Nelson Mandela*

# The vicious circle that we have to break through



## HEALTHCARE

Recovering from overload  
Learning  
Lack of manpower  
Need of psychological assistance



## MENTAL CARE

Depressions and dejections  
Burnouts  
Lack of social life  
Resume postponed events (Feniks)

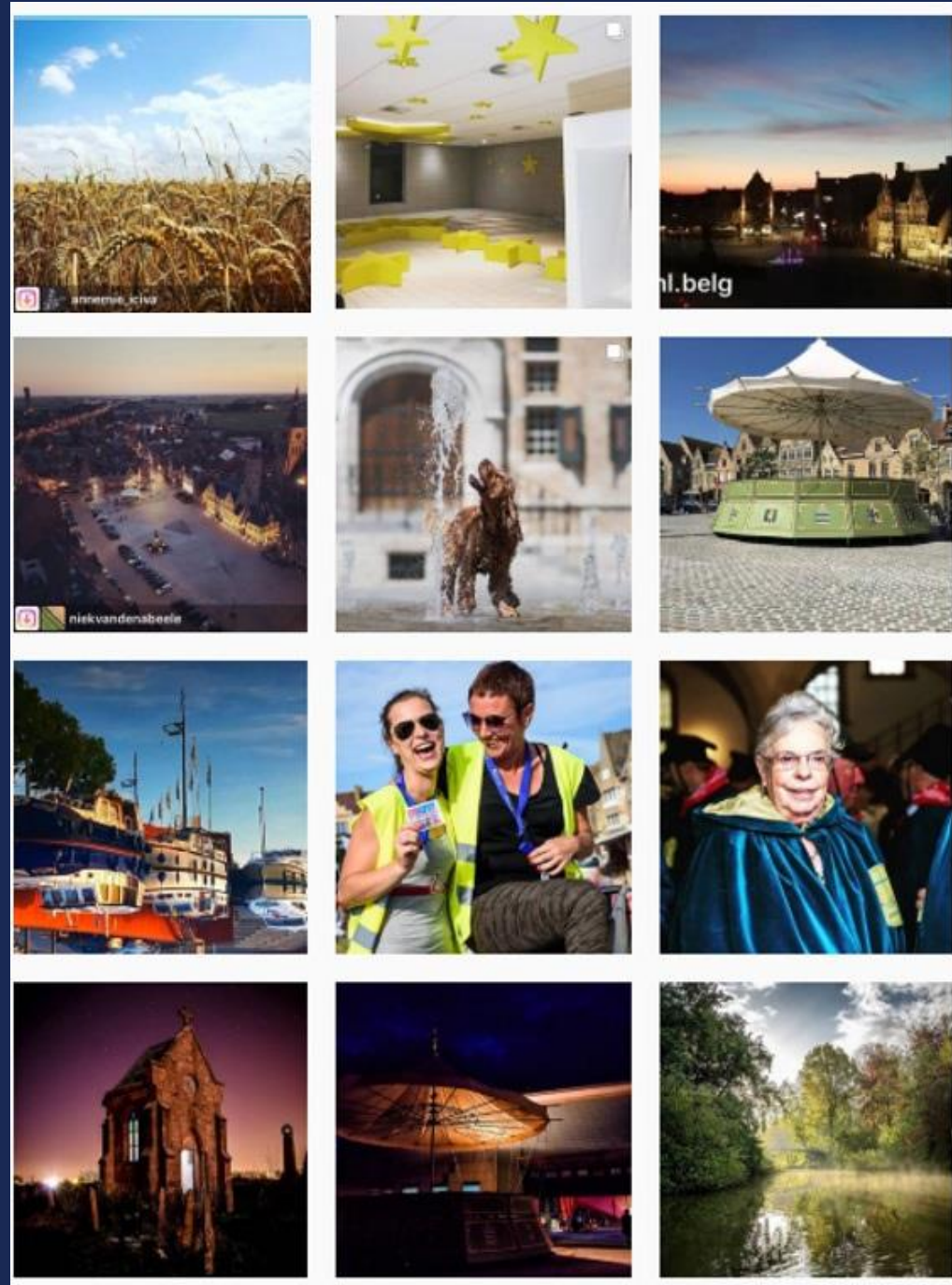


## FINANCIAL CARE

Poverty  
Business struggles  
Life had become expensive



# THE FUTURE AHEAD OF US



## HEALTHCARE

Keep investing in healthcare and research  
Make jobs in the sector attractive  
Be aware of possible threats  
Importance of local (medical) care  
See opportunities for medical services (outpatient clinic)



## PEOPLE

Bring people together  
Attention for mental and social care  
Inform, provide and invest in people  
Small esteemed events  
Resume big events and traditions



## BUSINESS AND FINANCES

Invest  
Attention for a future for young people  
Let the economy grow again  
Impuls for start ups



# THANK YOU

Let's talk about providing essentials services