

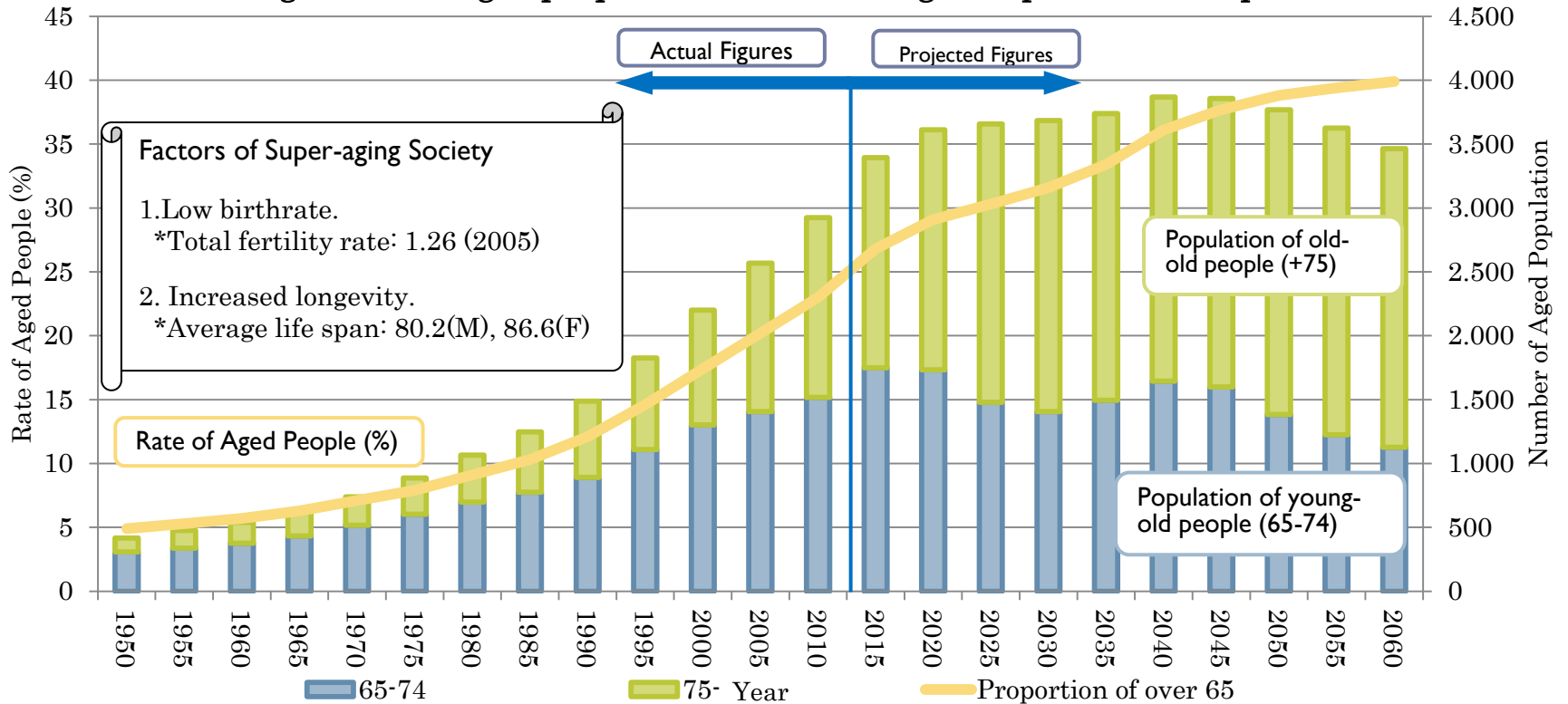
Health and Welfare Policy in Japan

Toward the Establishment of "Integrated Community Care System"

Kazuhiko Tabata (Hyogo University, JAPAN)

1. Super-aging Society

Fig.1 Rate of Aged people and Number of Aged Population in Japan



2.Serious problem in Japan

- ▶ The health care cost is raised rapidly.
 - ▶ The medical cost of aged people is higher than other age class(Fig.2). The population of old-old aged people will increase, the medical cost will expand rapidly in near future.
- ▶ The young people group that is expected to bear the medical expenses is reduced.
 - ▶ The number of workers is estimated to decline (Table1) .

Table1. Number of Workers


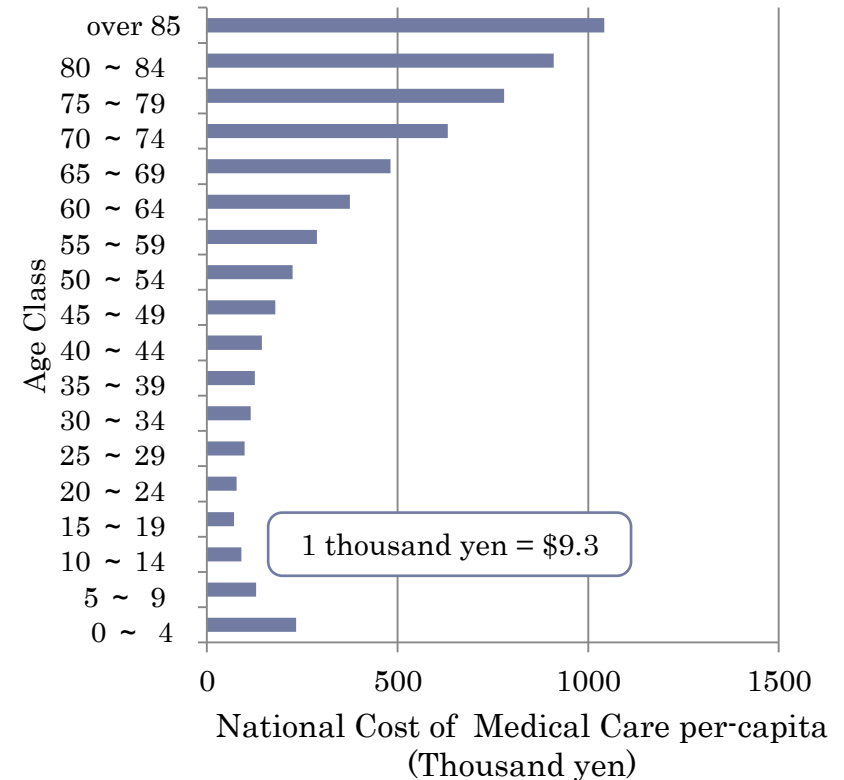
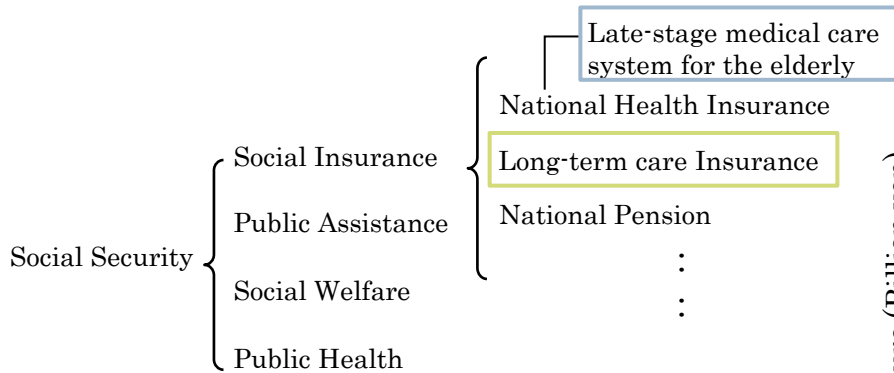
	2012	2020	2030	
Negative  Positive	6,555	6,190	5,683	Zero growth and labor force participation status quo Scenario
	6,555	6,331	5,954	Economic growth and Labor force participation progressive Scenario
	6,555	6,495	6,285	Economic growth and Labor force participation development Scenario

Fig.2 National Cost of Medical Care per-capita by Age Class (2011)



3. Social security and Social insurance system

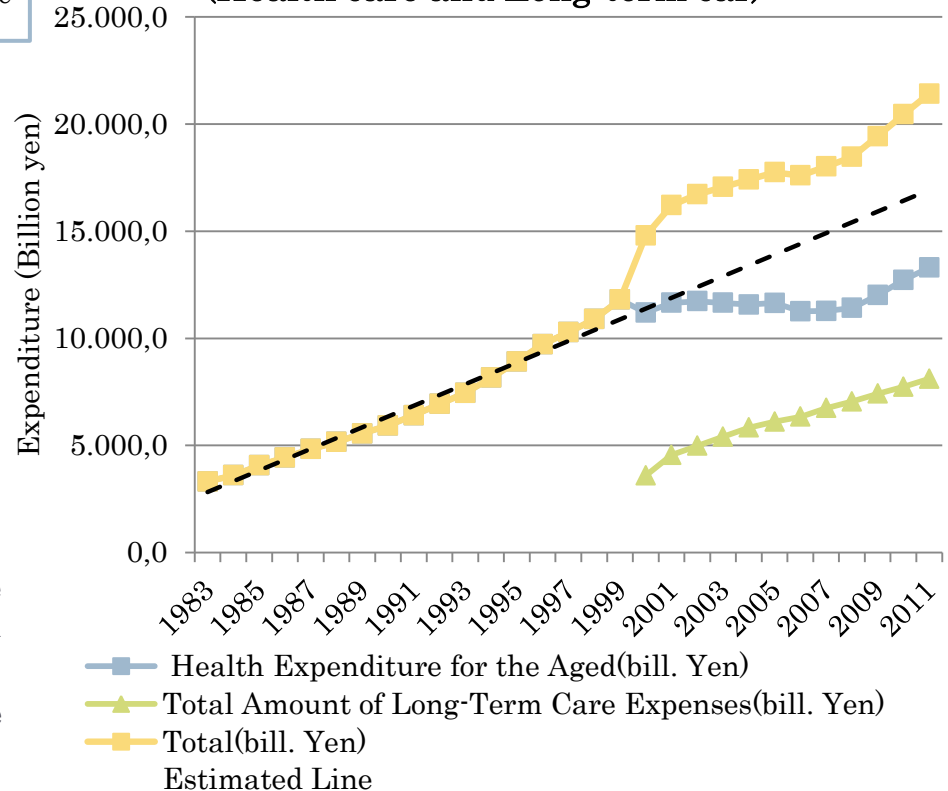
Fig.3 Structure of Social Security System



▶ **The long-term care Insurance.**

- ▶ It provides both facility care services and at-home care services by skilled workers for the elderly people.
- ▶ It has been introduced in order to decouple the cost of long-term care from the medical care service.
- ▶ They can use long-term care services while paying only a fraction of the costs.

Fig.4 Total Expenditure for the Aged (Health care and Long-term car)



3. Social security and Social insurance system

Fig.5 Proportion of the burden of medical care and long-term care for elderly expenses (by resource)

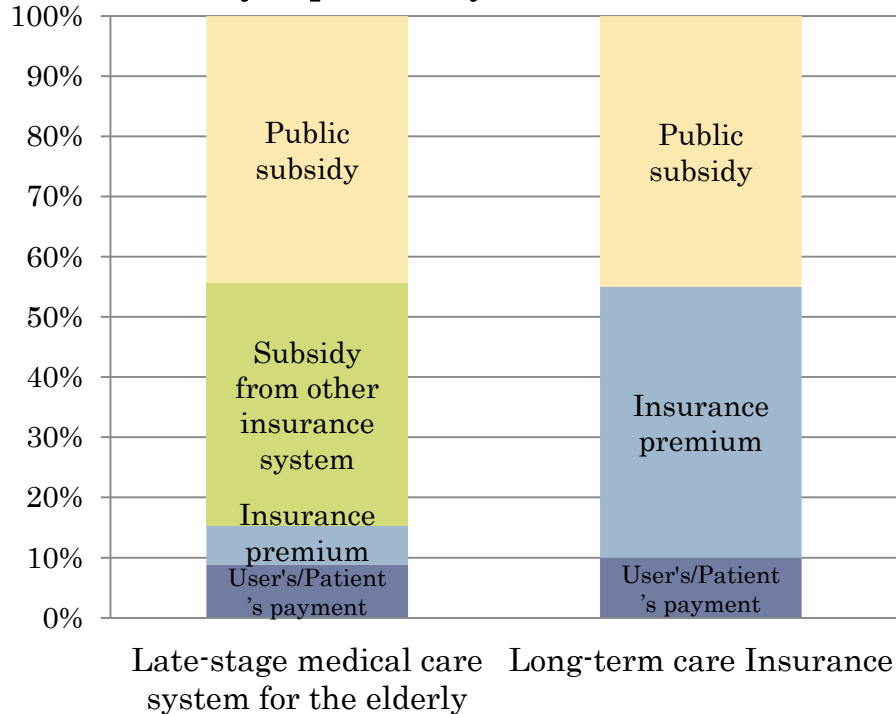
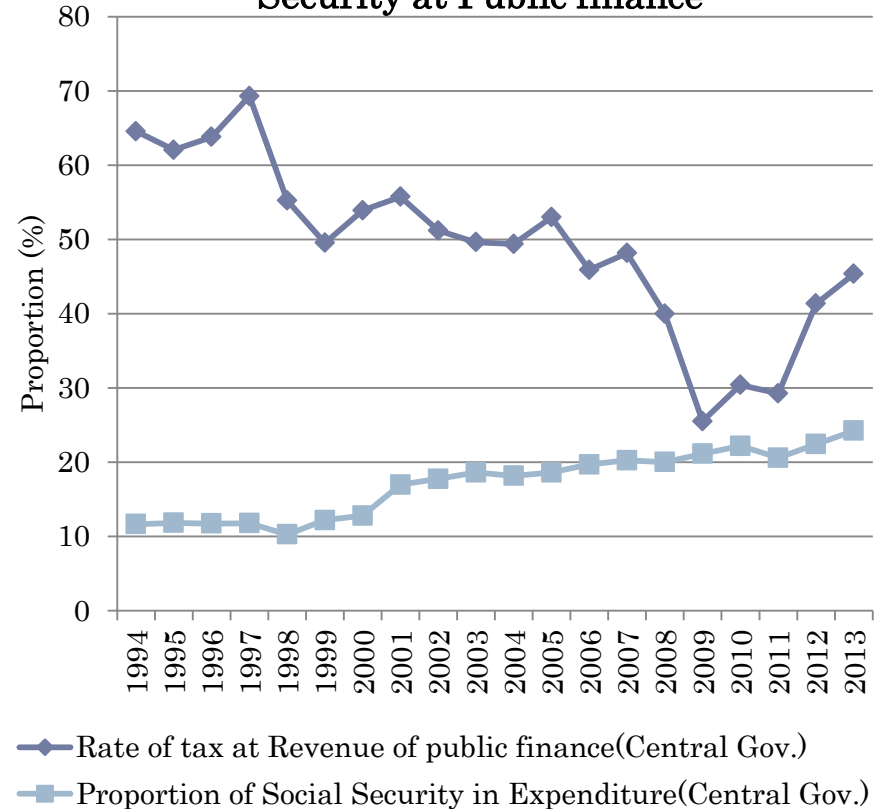


Fig.6 Proportion of Tax and Social Security at Public finance



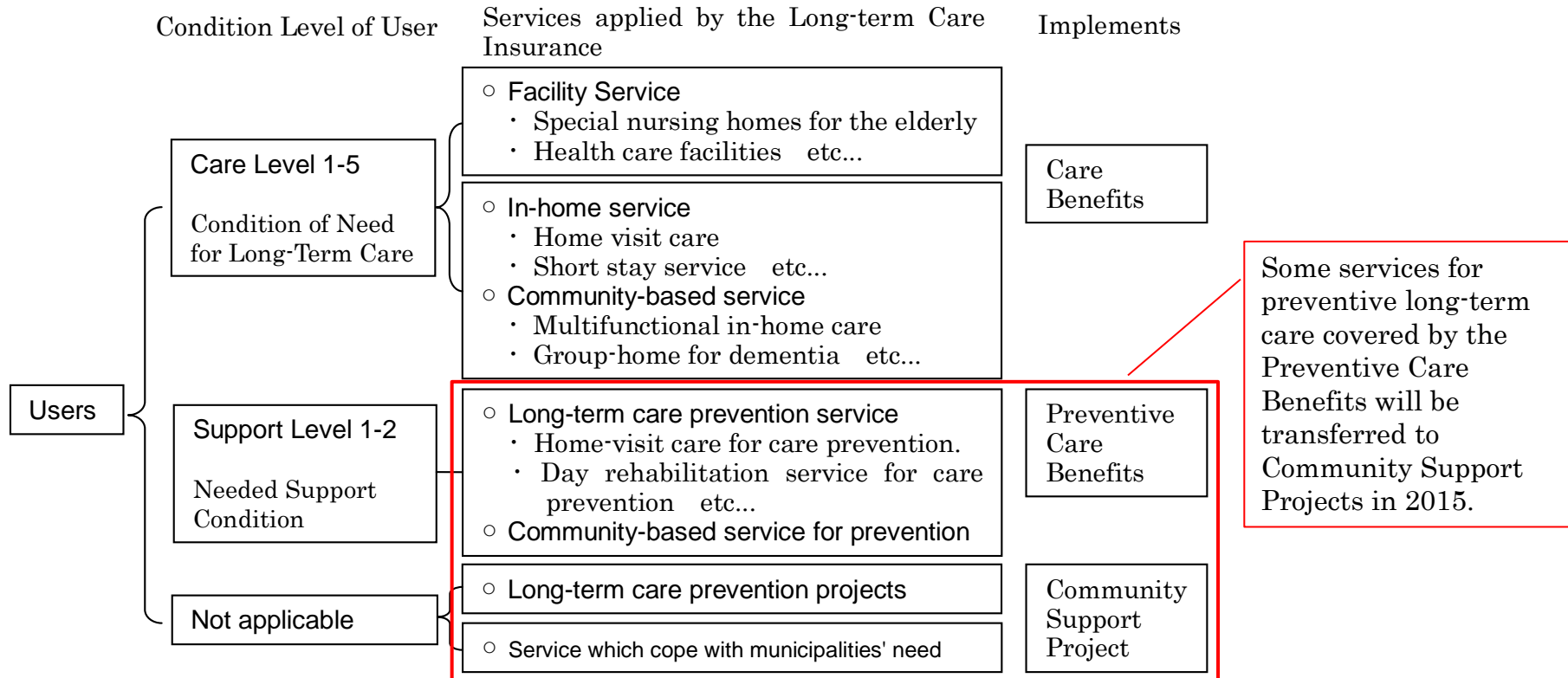
4.Reforms of the Long-term Care Insurance for the Integrated Community Care System

- ▶ **The history of toward to the achievement of Integrated Community Care System.**
 - ▶ **2000:** Introduced the Long-Term Care Insurance.
 - ▶ **2003:** Report "Long-Term Care for the Elderly in 2015" has been published by the study group of the Ministry of Health Labor and Welfare (M.H.L.W).
 - ▶ Proposed that in-home care service should be significant in order to maintain the dignity of the elderly.
 - ▶ Recommended the establishment of an integrated community care system.
 - ▶ **2005:** Reformed the Long-Term Care Insurance Act.
 - ▶ Establishment of "Community General Support Center" by each municipalities.
 - ▶ Introduced "Preventive Long-Term Care Service" (home-visit care or nursing) for people requiring little long-term care by own community. etc.
 - ▶ **2009:** The reports published by the Community-Based Integrated Care Research Committee in the M.H.L.W.
 - ▶ The Integrated Community Care System is defined in this report.
 - ▶ **2014:** The "Amendatory Law to the Related Acts for Securing Comprehensive Medical and Long-Term Care in the Community" was enacted.
 - ▶ The Long-Term Care Insurance Act would be reformed.
-



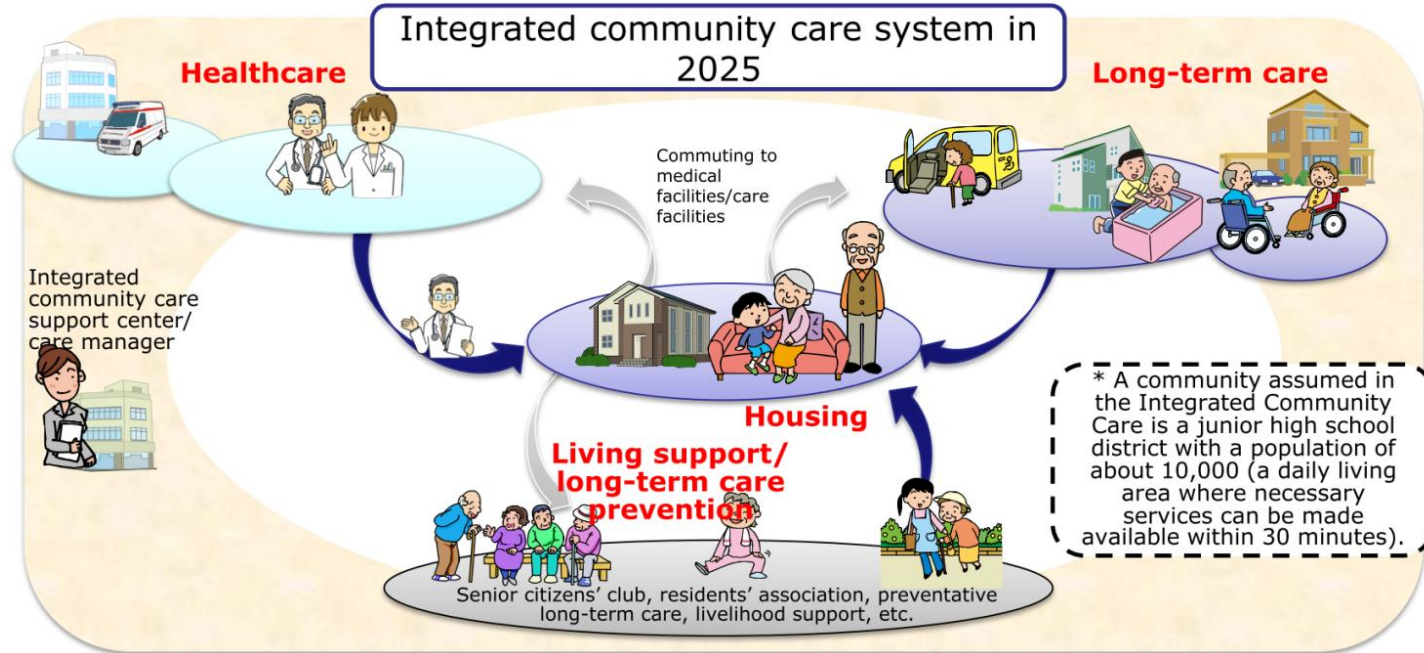
4.Reforms of the Long-term Care Insurance for the Integrated Community Care System

Fig7. The Long-Term Care Insurance (from 2005 to 2014)



4.Reforms of the Long-term Care Insurance for the Integrated Community Care System

Fig.8 Image of the Integrated Community Care System in 2025



5. Conclusion and Future Theme

- ▶ **The direction of health care system for elderly people in Japan.**
 - A) The policy promoting integration of medical care and long-term care in community was established.
 - B) The burden and responsibilities of each municipality would increase because of the preventive care will be internalized to community care.
 - C) The direction of the Integrated Community Care System becomes clear.

- ▶ **The future theme that should be considered.**
 - i. The housing policy for elderly people is not enough though aged people should be provided housing in accordance with their needs as the basic function for the Integrated Community Care System.
 - ii. Most of local governments expect that NPO/volunteers would implement the Community Care Project. But the community resources or basis to support their activities is insufficient.
 - iii. Economic disparities in the region will affect the Integrated Community Care System because municipalities manage them according to their revenue level.

